



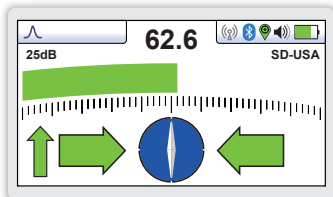
# vLoc3-5000 UTILITY LOCATOR

- Signal Select™ for positive line ID
- Real-time EMF Distortion Alert
- Internal Bluetooth and GPS
- Offset vector locate mode
- Cloud-based data warehousing
- Optional receiver/transmitter link

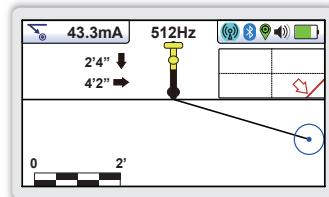
**The vLoc3-5000** is the pinnacle in utility locating instruments. The vLoc3-5000 is the only locator to combine Signal Select™, Signal Direction, real-time distortion alerts and internal GPS into one locator. Locate and GPS data can be stored in the locator and downloaded later for further analysis or use the free VMMMap smartphone application to send the data directly to the cloud to create real-time maps.

The receiver has a broad range of active frequencies from 98Hz to 200kHz and passive modes of power and radio. SD (Signal Direction) and SiS (Signal Select™) are standard with the vLoc3-5000 to help identify the target line in congested areas.

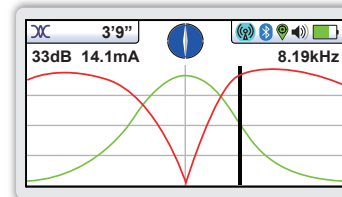
In addition to the classic locate screens the vLoc3-5000 includes new locate perspective screens of Vector Locate for fully automatic non-walk over locating, Transverse Graph showing both peak and null simultaneously providing immediate measurement of signal distortion, Plan View showing the relative orientation of the target line at any angle, and a new graphical sonde screen with guidance arrows leading to the sonde location even when it is vertical. Plug-in-play options for the receiver include external GPS devices and a MLA (marker locator adapter) to locate the position of buried markers.



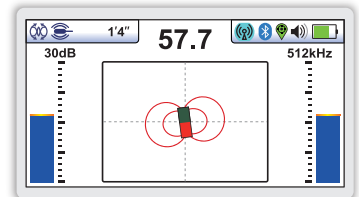
**Traditional Screen** - the industry standard screen with a peak bar graph and matching signal strength indicator, also gives the user on-the-fly color coded distortion warnings



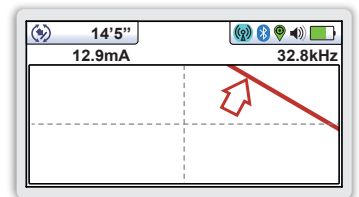
**Vector Locate** - shows orientation, line position, and distance relative to the locator in 3D



**Transverse Plot Screen** - is used to display the peak and null to compare distortion shape



**Sonde Screen** - arrow guidance showing direction to the sonde and depth of cover



**Plan View Screen** - displays the theoretical line in 2D from above ground in omnidirectional mode

### Alkaline and Li-ion Batteries

- Alkaline = typically 12-hours intermittent use
- Li-ion = typically 27-hours intermittent use

### USB Data Port

- Update the receivers firmware
- Download datalogs

### Accessory Port

- Remote Stethoscope Antenna
- A-Frame Fault locator
- Vehicle charging lead
- Charge Li-ion battery

### Antenna Configuration

- Two sets of 3D Antennas
- Omnidirectional antenna array



Tx-Link remotely controls transmitter functions from receiver  
300m/985ft.

Optional plug-in MLA marker locator



### Ultra Bright LCD

- High visibility 4.3"/10cm LCD
- Auto backlight

### Data Logging

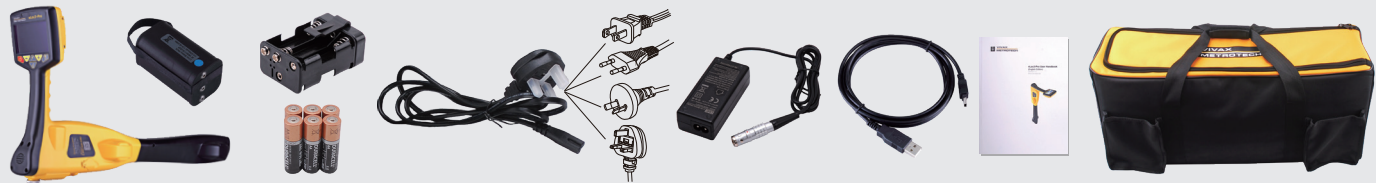
- 50 Million record internal storage
- GPS coordinates (if Bluetooth active)
- Download data with MyLocator app
- Access data VMMMap Cloud app

### Construction

- High impact ABS plastic construction
- IP65 and NEMA 4 rating
- Lightweight at only 4.6lbs / 2.1kg

vLoc3-5000 Receiver Specifications	
Construction	High impact ABS injection molded housing
Weight & Dimensions	4.6lbs (2.1kg) / 12.6in(L) x 4.9in(W) x 26.6in(H) (321mm x 124mm x 676mm)
Display	Transmissive 480 x 272 Pixel, 16-bit Color, High Visibility LCD, 4.3"
Battery options	Rechargeable custom Lithium-ion batteries with 100-240V AC mains charger Six x AA Alkaline batteries
Battery life	Lithium-ion – typically 27-hours intermittent use at 70°F (21°C) Alkaline – typically 12 hours intermittent use at 70°F (21°C)
Operating frequencies	Configurable frequencies from 98Hz to 200kHz Power – 50Hz and 60Hz Radio – 10kHz - 22.7kHz bandwidth Signal Direction – enhanced product model giving direction of outgoing current Signal Select™ – Real-time measurement of signal bleed-over caused by capacitive or inductive coupling to other utilities: SiS-491Hz, SiS-982Hz, SiS-8440Hz, SiS-9820Hz, SiS-35kHz
Operating modes	Classic Locate (2-section Bar graph), Transverse Graph Mode, Plan View (Omni Directional) Vector Locate (Lateral Position & Depth), Sonde Locate
Data logging and transfer	50 Million records - Records include depth, current, frequency, mode, gain setting, signal strength, GPS coordinate, date and time (if Bluetooth active) Download data from the receiver using the free MyLocator3 desktop app, save as xlx, txt, shp and kml files
Environmental	IP65 and NEMA 4

## What's in the box



## Popular Accessories



## Compatible Transmitters



Loc3-10SiSTx

**The Loc3-10SiSTx 10-Watt Transmitter** provides full support for SiS (Signal Select™) frequencies up to 35kHz. The Broadband Loc3-10SiSTx transmitter has multiple induction and direct-connection frequencies ranging from 98Hz to 200kHz. Additional features of SD (Signal Direction), fault-find and multi-frequency transmit modes are included.

- Auto-impedance matching
- Fault-finding frequencies built in
- Transmit multiple frequencies at once

Local Vivax-Metrotech Distributor:

### Vivax-Metrotech Corporation

3251 Olcott Street, Santa Clara, CA 95054, USA

**T/Free: 800-446-3392**

**Tel: +1-408-734-1400**

www.vivax-metrotech.com

CONNECT WITH US ON SOCIAL MEDIA



V1.4

Please visit our website for full product specifications.