

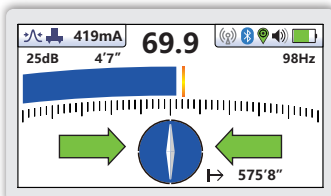


vLoc3-DM DEFECT MAPPER

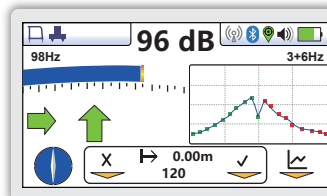
- Real-time on-screen mapping and data review
- Identify the location of coating defects
- Color-coded EM distortion warnings
- Low-frequency 3Hz and 4Hz current mapping
- Internal Bluetooth and GPS
- Internal data logging

The vLoc3-DM is used to precisely locate pipelines and assist in evaluating pipe coating defects. The system can be used on either transmission or distribution pipes. A complete ACVG survey can be undertaken using the vLoc3-DM and plug-in A-frame. The display on the vLoc3-DM has been configured specifically for pipeline evaluation. Data can be graphed in real time on the receiver, while still on site. The walk back feature highlights the operators position on the graph allowing them to return to a point of interest where further evaluation or an ACVG, A-frame survey can be undertaken.

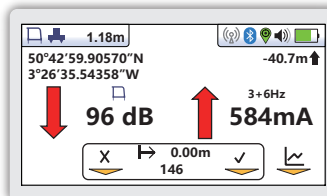
With two sets of 3D antennas signal distortion is easily detected and displayed on the bright full color display. The vLoc3-DM introduces new locate perspective screens of Vector Locate for fully automatic non-walk over locating, Transverse Graph showing both peak and null simultaneously providing immediate measurement of signal distortion, and Plan View showing the relative orientation of the cable at any angle. Visual and mechanical vibration alerts can also be configured by the user providing warnings for shallow depth, overload, overhead cables, and excessive swinging.



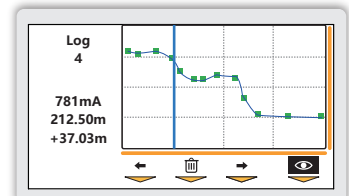
Classic Locate Screen - Used to locate the position of the pipeline, with the addition of surface distance to the last measurement and three color-coded distortion levels.



A-Frame Screen - The A-frame screen shows a peak locate screen, compass indicator, direction to fault, graph of fault magnitude and datalogging options.



Simultaneous Fault and Current Screen - shows both A-Frame and Defect Mapper current readings.



Review Screen - to review points of the complete graph. Shows LF current, total survey distance, distance from previous measurement.

Internal Bluetooth and GPS

Alkaline and Li-ion Batteries

- Alkaline - typically 12-hours of intermittent use
- Li-ion - typically 27-hours of intermittent use

USB Data Port

- Download data logs
- Update firmware
- Add/remove features

Accessory Port (plug and play)

- Remote Stethoscope Antenna
- A-Frame Fault & Holiday Locator
- Vehicle Charging Lead

Antenna Array

- Low-frequency optimization
- Two sets of 3D antennas
- Omni-directional antenna array

Low Frequency Sensor

When low frequency mapping is not required, the LF Sensor Foot can be removed



Ultra Bright LCD

- High visibility 4.3"/10cm LCD
- Auto backlight
- Details configured for pipeline evaluation

Data Logging

- 50 Million internal record storage
- GPS coordinates and data/time stamps
- Access data via the cloud
- Download data with MyLocator app

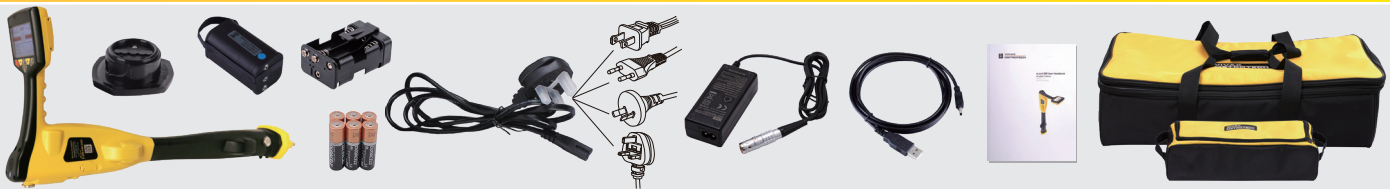
Construction

- Ergonomic and lightweight at 4.6 lbs. / 2.1 kg
- IP65 and NEMA 4 rating
- High impact injection molded housing

Backed by Vivax-Metrotech's superior dealer network, customer service and service centers.

vLoc3-DM Receiver Specifications	
Construction	High impact ABS injection molded housing
Weight & Dimensions	4.6lbs (2.1kg) / 12.6in(L) x 4.9in(W) x 26.6in(H) (321mm x 124mm x 676mm)
Display	Transmissive 480 x 272 Pixel, 16-bit Color, High Visibility 4.3"/10cm LCD
Battery options	Rechargeable custom Lithium-ion batteries with 100-240V AC mains charger Six x AA Alkaline batteries
Battery life	Lithium-ion – typically 27-hours intermittent use at 70°F (21°C) Alkaline – typically 12 hours intermittent use at 70°F (21°C)
Operating frequencies	Active: - Configurable frequencies from 98Hz to 200 kHz - Signal Direction (SD) - enhanced frequency giving direction of the outgoing transmitter current Passive: Power - 50Hz and 60Hz, Radio - 10kHz - 22.7kHz bandwidth Mapping: 3/6Hz and 4/8Hz
Operating modes	Defect Mapping, Defect Mapping A-Frame, Classic Locate (Bar graph), Transverse Graph Mode, Plan View (Omni Directional) Vector Locate (Lateral Position & Depth), Sonde Locate
Data logging and transfer	50 Million records - Records include depth, current, frequency, mode, gain setting, signal strength, GPS coordinate, date and time Download data from the receiver using the free MyLocator3 desktop app, save as xls, txt, shp and kml files
Environmental	IP65 and NEMA 4

What's in the box



Popular Accessories



Fault Locator



Vehicle Charging Lead



Sondes



Remote Antenna

Compatible Transmitters



150-Watt Transmitter

The Loc-150Tx, 150-Watt transmitter (DM transmitter) is used to apply a signal current to the anode bed. The transmitter is designed to be powered from CP (Cathodic Protection) stations, AC or external power, eliminating the need for batteries.

Local Vivax-Metrotech Distributor:

Vivax-Metrotech Corporation

3251 Olcott Street, Santa Clara, CA 95054, USA

T/Free: 800-446-3392

Tel: +1-408-734-1400

www.vivax-metrotech.com

CONNECT WITH US ON SOCIAL MEDIA



V1.1

Please visit our website for full product specifications.